



**REGIONAL SPECIALISED METEOROLOGICAL CENTRE-TROPICAL CYCLONES, NEW DELHI
TROPICAL WEATHER OUTLOOK**

DEMS-RSMC TROPICALCYCLONES NEW DELHI DATED 17.10.2022

TROPICAL WEATHER OUTLOOK FOR NORTH INDIAN OCEAN (THE BAY OF BENGAL AND ARABIAN SEA) VALID FOR NEXT 120 HOURS ISSUED AT 0600 UTC OF 17.10.2022 BASED ON 0300 UTC OF 17.10.2022.

BAY OF BENGAL:

A CYCLONIC CIRCULATION HAS FORMED OVER SOUTH ANDAMAN SEA & NEIGHBOURHOOD AT 0300 UTC OF TODAY, THE 17TH OCTOBER 2022. UNDER ITS INFLUENCE, A LOW PRESSURE AREA IS LIKELY TO FORM OVER SOUTHEAST & ADJOINING EASTCENTRAL BAY OF BENGAL AROUND 20TH OCTOBER. IT IS LIKELY TO MOVE WEST-NORTHWESTWARDS TOWARDS WESTCENTRAL & ADJOINING SOUTHWEST BAY OF BENGAL AND BECOME MORE MARKED DURING SUBSEQUENT 48 HOURS.

SCATTERED LOW AND MEDIUM CLOUDS WITH EMBEDDED INTENSE TO VERY INTENSE CONVECTION LAY OVER BAY OF BENGAL AND ANDAMAN SEA & NICOBAR ISLANDS.

PROBABILITY OF CYCLOGENESIS (FORMATION OF DEPRESSION) DURING NEXT 120 HRS:

24 HOURS	24-48 HOURS	48-72 HOURS	72-96 HOURS	96-120 HOURS
NIL	NIL	NIL	NIL	LOW

ARABIAN SEA:

YESTERDAY'S CYCLONIC CIRCULATION OVER CENTRAL ARABIAN SEA LAY OVER SOUTHWEST ARABIAN SEA AND NEIGHBOURHOD AT 0300 UTC OF TODAY, THE 17TH OCTOBER, 2022.

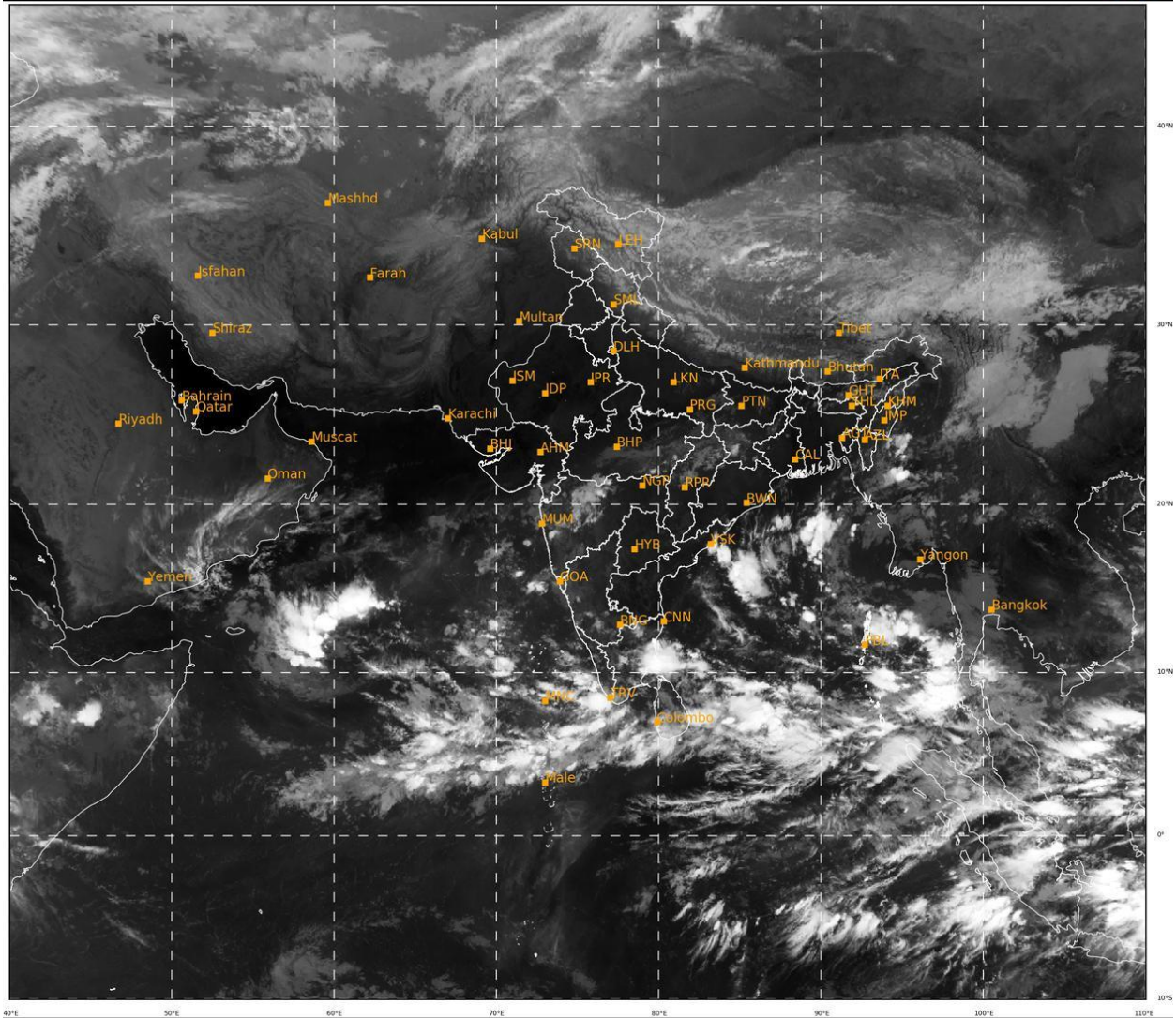
YESTERDAY'S CYCLONIC CIRCULATION OVER SOUTHEAST ARABIAN SEA & ADJOINING KERALA COAST PERSISTED OVER THE SAME REGION AT 0300 UTC OF TODAY, THE 17TH OCTOBER, 2022.

SCATTERED LOW AND MEDIUM CLOUDS WITH EMBEDDED INTENSE TO VERY INTENSE CONVECTION LAY OVER WESTCENTRAL AND SOUTH ARABIAN SEA. SCATTERED LOW AND MEDIUM CLOUDS WITH EMBEDDED MODERATE TO INTENSE CONVECTION LAY OVER EASTCENTRAL ARABIAN SEA AND COMORIN AREA.

PROBABILITY OF CYCLOGENESIS (FORMATION OF DEPRESSION) DURING NEXT 120 HRS:

24 HOURS	24-48 HOURS	48-72 HOURS	72-96 HOURS	96-120 HOURS
NIL	NIL	NIL	NIL	NIL

Remarks: NIL



511

941

IMD, DELHI